



jordan fishwick

37 Whitelow Road, M21 9HG
Guide Price £2,750 Per Calendar Month



Whitelow Road Chorlton M21 9HG

£2,750 Per Calendar Month



The Property

***** AVAILABLE NOW ***** This beautiful four bedroom bay fronted semi detached period property is super close to Chorlton Green and Beech road. This stunning property provides spacious and light accommodation over three floors with cellar as well as off road parking for two cars. The property retains many original features and has been stylishly decorated throughout. The accommodation briefly comprises: covered porch, entrance hallway, bay fronted lounge, dining room, kitchen with separate utility and WC. To the first floor there are three double bedrooms and bathroom with four piece suite, whilst to the second floor there is an additional fourth bedroom with Ensuite. The cellar provides useful storage space. Externally the garden to the front of the property offers privacy from the street, parking for two cars and fully fenced to cover rear garden entrance, the rear garden is large with established borders, lawn, patio to the side of the house and working greenhouse. Both double glazing and gas central heating are installed.

***** To arrange a viewing please call 0161 860 4444 *****

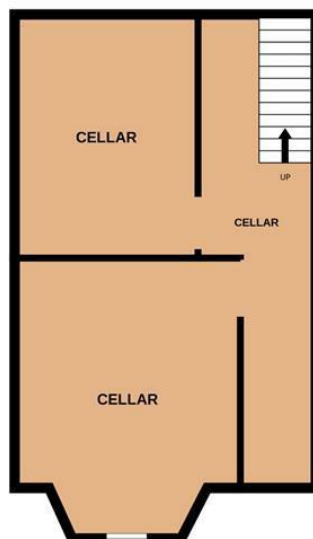
- Council Tax Band D - EPC E
- 4 Double Bedrooms
- Large Private Rear Garden
- Superbly presented
- Part furnished
- Chorlton Green location
- Available Now



Energy Efficiency Rating		
	Current	Potential
Very energy efficient - lower running costs		
(92 plus) A		
(81-91) B		
(69-80) C		73
(55-68) D		
(39-54) E	50	
(21-38) F		
(1-20) G		
Not energy efficient - higher running costs		
England & Wales		EU Directive 2002/91/EC



BASEMENT LEVEL:
477 sq.ft. (44.3 sq.m.) approx.



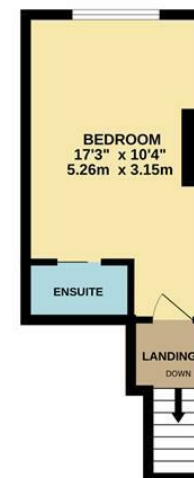
GROUND FLOOR:
664 sq.ft. (61.7 sq.m.) approx.



1ST FLOOR:
613 sq.ft. (57.0 sq.m.) approx.



2ND FLOOR:
207 sq.ft. (19.2 sq.m.) approx.



TOTAL FLOOR AREA : 1962 sq.ft. (182.3 sq.m.) approx.
Measurements are approximate. Not to scale. Illustrative purposes only
Made with Metropix ©2025



These particulars are believed to be accurate but they are not guaranteed and do not form a contract. Neither Jordan Fishwick nor the vendor or lessor accept any responsibility in respect of these particulars, which are not intended to be statements or representations of fact and any intending purchaser or lessee must satisfy himself by inspection or otherwise as to the correctness of each of the statements contained in these particulars. Any floorplans on this brochure are for illustrative purposes only and are not necessarily to scale.

Offices at: Chorlton, Didsbury, Disley, Hale, Glossop, Macclesfield, Manchester Deansgate, Manchester Whitworth Street, New Mills, Sale, Wilmslow and Withington